

FINISHES AND COLORS



DISCLAIMER - GENERAL NOTES

The information provided by WoodN Industries in this document are solely indicative, they are based on the present state of knowledge and must be considered only as a description of our products and their possible application. Such information must not be interpreted as a guarantee of specific features, performances or warranties of the product. Material's colors and finishes represented in this document are the result of printing techniques so they may slightly differ from the original colors. Original samples are available upon request and constitute only a general indication of the dimensions and the aesthetic appearance of Woodn™ profiles. WoodN Industries may change the information included in this document at any time and without further notice. WoodN Industries does not warrant the accuracy and completeness of the information in this document and furthermore their suitability for the purpose which it is consulted for by the other parties. WoodN's customers or third parties must ascertain they have the most recent version of this document, available at www.woodn.com. It is advised that customers and third parties have a professional adviser to inform them about the suitability of the products for all desired applications and about applicable laws and regulations. WoodN Industries reserves the right to modify products and concerning features without prior notice. WoodN Industries is not liable for any damage arising from, or related to, the use of this document. Woodn™ material does not have structural characteristics and therefore WoodN Industries declines all responsibilities for improper use of the material. No sections of this publication can be reproduced, stored in database, or transmitted in any form or by any other mean without the explicit approval of WoodN Industries. For more information please contact WoodN Industries.

ACCELERATED AGING RESISTANCE TEST

COLOUR STABILITY

Colour stability has been tested in compliance with accelerated weathering tests (UNI EN ISO 4892-2:2009 and UNI EN ISO 2105-A02:1996); the result of the test is expressed by assigning a numerical value to colour variation according to the international greyscale, which is a useful method to measure colors differences.

PURPOSE OF THE TEST

Resistance to accelerated aging on Woodn profiles according to UNI norms EN ISO 4892-2:2009 and EN 20105-A02:1996.

sample	color	Greyscale degree* after 3600h of exposure against original samples	Greyscale degree** after 3600h of exposure compared to samples aged for 1200 h
1	Bianco Carrara	3	4/5
2	Lagorai	3	4/5
9	Cuba	3/4	4/5
10	Caffè Bogotà	4	4
13	Myanmar	4	4
14	Grigio Silverstone	4	4/5
28	Grigio Londra	3	4/5
33	Beige Sahara	3/4	5

(*) The international greyscale goes from Grade 1 (maximum colour difference) to Grade 5 (minimum colour difference).

COLOUR

In the first months after the installation, the composite wood profiles are subject to a gradual change from the starting color, due to the occurrence of two phenomena. The surface yellowing is due to oxidation of the lignin contained in the wood fibers after exposure to UV rays, this phenomenon has a transient nature. The disappearance of the yellowish hue occurs within a few months after exposure to the elements and can be accelerated by performing frequent washing with plain water. The wood fiber also naturally tends to lighten. This process – slowed down with respect to what happens to wood because of the presence of the plastic component and of special additives – is influenced by the environmental conditions of the exposure. After the settling-in period, the tone achieved remains almost unchanged over time.

Like any other composite wood product, WoodN and Greenwood profiles may be subject to variations in color and surface finish from one production batch to another, and may indeed occur, although in lesser degree, even within the same production batch. It is therefore recommended, in order to reduce the differences naturally inherent in the natural component of the product and generated by the manual brushing process, to buy all the boards needed for installation in one lot, and extra boards at the same time in case of future repairs or replacements.

THERMAL PROPERTIES

Like any other building material, also Greenwood is heated by solar radiation, leading to surface temperatures that depend on the colour of the board and the intensity of the radiation itself.

FINISHES AND COLORS WOODN

Brushed (for Indoor and Outdoor applications)

01 Bianco Carrara



01-PW Avorio



02 Lagorai



28 Grigio Londra



14 Grigio Silverstone



48 Black



99 Cuba



13 Myanmar



10 Caffè Bogotà



33 Beige Sahara



77 CocoWalk



73 Sinai



80 Terracotta

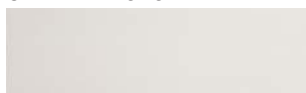


Smooth (only for Indoor applications)

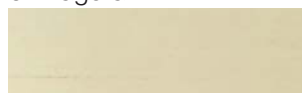
01 Bianco Carrara



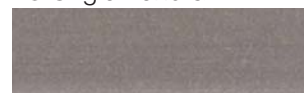
01-PW Avorio



02 Lagorai



28 Grigio Londra



14 Grigio Silverstone



48 Black



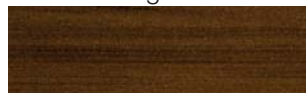
99 Cuba



13 Myanmar



10 Caffè Bogotà



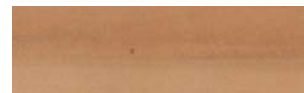
33 Beige Sahara



77 CocoWalk



73 Sinai



80 Terracotta



Colors and textures shown are purely indicative. Check every time a real sample for approval.
Considering the presence of natural wood fibers, colors may vary from batch to batch.

SRI (Solar Reflectance Index)

The SRI index is a value that is attributed to some building materials and takes into account both the material's ability to reflect solar radiation and the ability to emit solar radiation absorbed as thermal radiation.

PURPOSE OF THE TEST

The steady-state temperature "Ts" and solar reflection index "SRI" were determined in accordance with standard ASTM E1980 - 11 (Approach 1) for three convective coefficients (rate of heat transfer) "h_c":

- h_c = 5 W/(m² * K) corresponding to low-wind conditions (0 to 2 m/s);
- h_c = 12 W/(m² * K) corresponding to medium-wind conditions (2 to 6 m/s);
- h_c = 30 W/(m² * K) corresponding to high-wind conditions (6 to 10 m/s);

sample	Solar reflection index SRI		
	h _c = 5 W/(m ² *K)	h _c = 12 W/(m ² *K)	h _c = 30 W/(m ² *K)
Greendeck Bianco Loft	82,4	82,5	82,5
Greendeck Miele Loft	32,6	32,4	32,1
Greendeck Miele Solarium	16,4	15,7	14,9
Greendeck Taupe Loft	35,9	36,5	36,7
Woodn Beige Sahara	36,6	36,9	36,9
Woodn Sinai	47,9	48,0	47,8

SPECIES UNICA



BORN IN VENICE

WOODN INDUSTRIES SRL

Headquarter:

Via Ippolito Caffi, 17 - 32100 Belluno (BL), ITALY
tel: +39 049 89.60.706
sales@woodn.com

Registered office:

Sestiere San Marco, 3829 - 30124 Venezia (VE), ITALY

Production site:

Strada Scudetto, 9 - 31100 - Treviso (TV), ITALY

SPECIES UNICA



BORN IN VENICE

www.woodn.com