

# COLOR'S ACCELERATED AGING TEST

SPECIES UNICA



BORN IN VENICE

#### DISCLAIMER - GENERAL NOTES

The information provided by WoodN Industries in this document are solely indicative, they are based on the present state of knowledge and must be considered only as a description of our products and their possible application. Such information must not be interpreted as a guarantee of specific features, performances or warranties of the product. Material's colors and finishes represented in this document are the result of printing techniques so they may slightly differ from the original colors. Original samples are available upon request and constitute only a general indication of the dimensions and the aesthetic appearance of Woodn™ profiles. WoodN Industries may change the information included in this document at any time and without further notice. WoodN Industries does not warrant the accuracy and completeness of the information in this document and furthermore their suitability for the purpose which it is consulted for by the other parties. WoodN's customers or third parties must ascertain they have the most recent version of this document, available at [www.woodn.com](http://www.woodn.com). It is advised that customers and third parties have a professional adviser to inform them about the suitability of the products for all desired applications and about applicable laws and regulations. WoodN Industries reserves the right to modify products and concerning features without prior notice. WoodN Industries is not liable for any damage arising from, or related to, the use of this document. Woodn™ material does not have structural characteristics and therefore WoodN Industries declines all responsibilities for improper use of the material. No sections of this publication can be reproduced, stored in database, or transmitted in any form or by any other mean without the explicit approval of WoodN Industries. For more information please contact WoodN Industries.

# ACCELERATED AGING RESISTANCE TEST

## COLOUR STABILITY

Colour stability has been tested in compliance with accelerated weathering tests (UNI EN ISO 4892-2:2009 and UNI EN ISO 2105-A02:1996); the result of the test is expressed by assigning a numerical value to colour variation according to the international greyscale, which is a useful method to measure colors differences.

## PURPOSE OF THE TEST

Resistance to accelerated aging on Woodn profiles according to UNI norms EN ISO 4892-2:2009 and EN 20105-A02:1996.

## TEST METHOD

The equipment used is fitted with a 6500 watt water-cooled Xenon lamp.

The equipment is set according to the following parameters:

- exposure to continuous light
- light source on the samples: 0.50 W/m<sup>2</sup> at 340 nm, corresponding to 580 W/m<sup>2</sup>
- total power exposed to the sample: 2.50 GJ/m<sup>2</sup> and 7.5 GJ/m<sup>2</sup>
- exposure program: 102 min. of light exposure and 18 min. of light exposure + sprayed deionized water.

sample	color	Greyscale degree* after 3600h of exposure against original samples	Greyscale degree** after 3600h of exposure compared to samples aged for 1200 h
1	Bianco Carrara	3	4/5
2	Lagorai	3	4/5
6	Marrakech	3/4	4/5
9	Cuba	3/4	4/5
10	Caffè Bogotà	4	4
12	Segovia	3	4/5
13	Myanmar	4	4
14	Grigio Silverstone	4	4/5
27	Grigio Lavaredo	2/3	4/5
28	Grigio Londra	3	4/5
33	Beige Sahara	3/4	5

(\*) The international greyscale goes from Grade 1 (maximum colour difference) to Grade 5 (minimum colour difference).

# FINISHES AND COLORS WOODN

## Brushed (for Indoor and Outdoor applications)

01 Bianco Carrara



01-PW Avorio



02 Lagorai



28 Grigio Londra



14 Grigio Silverstone



48 Black



99 Cuba



13 Myanmar



10 Caffè Bogotà



33 Beige Sahara



77 CocoWalk



73 Sinai



80 Terracotta



## Smooth (only for Indoor applications)

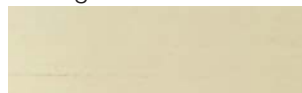
01 Bianco Carrara



01-PW Avorio



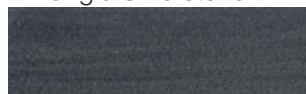
02 Lagorai



28 Grigio Londra



14 Grigio Silverstone



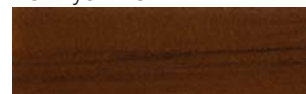
48 Black



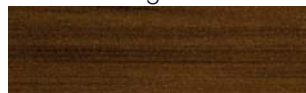
99 Cuba



13 Myanmar



10 Caffè Bogotà



33 Beige Sahara



77 CocoWalk



73 Sinai



80 Terracotta



Colors and textures shown are purely indicative. Check every time a real sample for approval.  
Considering the presence of natural wood fibers, colors may vary from batch to batch.

# FINISHES AND COLORS GREENWOOD

## Solarium (for Indoor and Outdoor applications)

14S Bianco



12S Miele



21S Tabacco



23S Terra di Siena



31S Ebano



32S Wengè



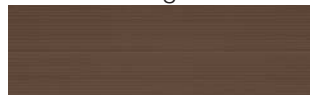
16S Taupe



33S Aubergine



10S Caffè Bogotà

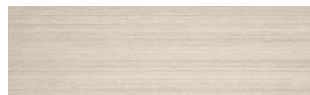


13S Myanmar



## Loft (for Indoor and Outdoor applications)

14L Bianco



12L Miele



21L Tabacco



23L Terra di Siena



31L Ebano



32L Wengè



16L Taupe



33L Aubergine



10L Caffè Bogotà



13L Myanmar



Colors and textures shown are purely indicative. Check every time a real sample for approval.  
Considering the presence of natural wood fibers, colors may vary from batch to batch.

SPECIES UNICA



BORN IN VENICE

Headquarter:

Woodn Industries, Via Ippolito Caffi, 17 - 32100 Belluno, ITALY

tel: +39 049 89.60.706

info@woodn.com

Production site:

Woodn Italy, Via delle Industrie, 11 - 30030 Salzano (VE), ITALY

[www.woodn.com](http://www.woodn.com)